

Portland Public Schools Enrollment Summaries, October 2004

Table of Contents

[Introduction](#)

Historical Enrollment

[Enrollment by Program Type, School and Year, 1995 through 2004](#)

Introduction

This summary report is a profile of current and historical enrollments for Portland Public Schools. Included herein are various summaries of these data, *e.g.*, by building, grade level¹, ethnicity, and gender.

Enrollment counts are compiled on or about the first of October. An enrolled student is defined as a student who attends one or more schools or programs within the District. Regardless of the number of schools or programs attended, each student is counted only once; the counts are unduplicated.

These are interim summaries pending the publication of the entire October 2004 *Enrollment Report*.

¹ The grade level category 'UN' represents ungraded, unassigned or unclassified students, *e.g.*, special education students who attend special education classes in separate classrooms.

Program Type

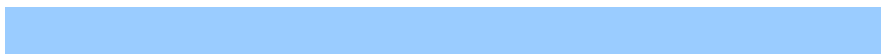
Year

Program Type

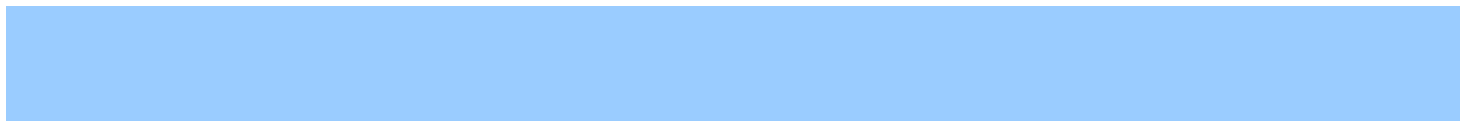
Year

ODE# School

1995-96 1996-97 1997-98 1998-99 1999-00 2000-01 2001-02 2002-03 2003-04 2004-05



PORTLAND PUBLIC SCHOOLS
Enrollment Trends, 1995-96 through 2004-05
by Program Type, School and



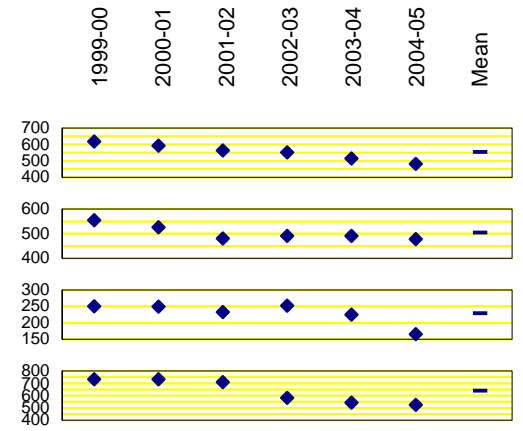
PORTLAND PUBLIC SCHOOLS

Enrollment Trends, 1995-96 through 2004-05

by Program Type, School and Year (Grades PK through 12)

Program Type		Year						Enrollment Trends			
		1999-00	2000-01	2001-02	2002-03	2003-04	2004-05	Mean	St. Dev	1-Year Change	
ODE#	School									#	%
862	James John	618	592	564	551	514	481	553	50.2	-33	-6.4
864	Kelly	554	526	481	491	491	478	504	30.1	-13	-2.6
865	Kenton	250	249	233	252	225	166	229	32.8	-59	-26.2
866	King	732	733	710	583	544	525	638	97.6	-19	-3.5
868	Laurelhurst	512	526	526	561	561	558	541	21.8	-3	-0.5
869	Lee	391	409	408	419	387	333	391	30.9	-54	-14.0
870	Lent	397	401	400	383	335	355	379	27.5	20	6.0
871	Lewis	263	292	294	294	289	271	284	13.4	-18	-6.2
872	Llewellyn	330	336	311	315	302	298	315	15.1	-4	-1.3
873	Maplewood	295	305	309	279	288	285	294	11.7	-3	-1.0
1278	Markham	393	370	358	333	330	301	348	32.8	-29	-8.8
875	Marysville	397	400	395	394	367	349	384	20.8	-18	-4.9
876	Meek	242	198	198	219			N/A	N/A	N/A	N/A
879	Peninsula	331	323	328	333	293	271	313	25.3	-22	-7.5
883	Richmond	490	477	470	443	415	393	448	38.0	-22	-5.3

Student Enrollment



ool

1999-00

2000-01

2001-02

2002-03

2003-04

2004-05

Mean

St. Dev

#

%

19

20

20

20

20

20

Me

PORTLAND PUBLIC SCHOOLS

Enrollment Trends, 1995-96 through 2004-05

by Program Type, School and Year (Grades PK through 12)

Student Enrollment

Program Type		Year					Enrollment Trends				
		1999-00	2000-01	2001-02	2002-03	2003-04	2004-05	Mean	St. Dev	1-Year Change	
ODE#	School								#	%	
903	Woodmere	488	474	503	490	477	458	482	15.5	-19	-4.0
904	Woodstock	322	337	372	364	345	343	347	18.2	-2	-0.6
905	Youngson	197	185	177				N/A	N/A	N/A	N/A
		24,818	24,420	24,125	23,177	21,924	21,505	23,328	1,368.6	-419	-1.9
831	Beaumont	629	631	670	610	577	542	610	45.0	-35	-6.1
832	Binnsmead	647	699	735	769	687	687	704	42.5	0	0.0
848	Fernwood	591	575	608	632	644	582	605	27.9	-62	-9.6
849	George	555	549	558	546	467	473	525	42.6	6	1.3
852	Gray	507	508	526	533	497	520	515	13.5	23	4.6
853	Gregory Heights	781	812	821	740	718	630	750	71.2	-88	-12.3
858	Hosford	431	426	374	386	377	405	400	24.8	28	7.4
1277	Jackson	808	796	807	823	768	773	796	21.5	5	0.7
863	Kellogg	645	645	667	671	633	591	642	28.9	-42	-6.6
1243	Lane	657	678	696	652	638	592	652	35.9	-46	-7.2
877	Mt. Tabor	672	670	700	707	729	696	696	22.3	-33	-4.5
878	Ockley Green	486	408	490	475	427	385	445	44.5	-42	-9.8

1999-00

2000-01

2001-02

2002-03

2003-04

2004-05

Mean

PORTLAND PUBLIC SCHOOLS

Enrollment Trends, 1995-96 through 2004-05

by Program Type, School and Year (Grades PK through 12)

Student Enrollment

Program Type		Year	Enrollment Trends		
			1-Year Change		
ODE#	School	1999-00	Mean	#	%

1999-00

2000-01

2001-02

2002-03

2003-04

2004-05

Mean

PORTLAND PUBLIC SCHOOLS

Enrollment Trends, 1995-96 through 2004-05

by Program Type, School and Year (Grades PK through 12)

Student Enrollment

Program Type		Year					Enrollment Trends				
		1999-00	2000-01	2001-02	2002-03	2003-04	2004-05	Mean	St. Dev	1-Year Change	
ODE#	School								#	%	
		13,549	13,609	13,648	13,427	12,982	12,683	13,316	393.7	-299	-2.3
		48,858	48,567	48,430	47,140	44,754	43,594	46,891	2,215.7	-1,160	-2.6
1363	da Vinci	318	316	319	320	327	350	325	12.8	23	7.0
2749	E.S.L. Assessment Center		17	32	9			N/A	N/A	N/A	N/A
1362	Environmental Middle School	185	190	218	225	233		N/A	N/A	N/A	N/A
2724	Head Startd										

1999-00
2000-01
2001-02
2002-03
2003-04
2004-05
Mean

PORTLAND PUBLIC SCHOOLS

Enrollment Trends, 1995-96 through 2004-05

by Program Type, School and Year (Grades PK through 12)

Student Enrollment

Program Type		Year					Enrollment Trends				
		1999-00	2000-01	2001-02	2002-03	2003-04	2004-05	Mean	St. Dev	1-Year Change	
ODE#	School	1999-00	2000-01	2001-02	2002-03	2003-04	2004-05	Mean	St. Dev	#	%
		50,923	50,634	50,401	49,224	46,805	45,472	48,910	2,262.6	-1,333	-2.8
		1,706	1,416	1,297	1,381	1,270	1,171	1,374	184.4	-99	-7.8
		2,117	2,311	2,330	2,170	462	562	1,659	892.5	100	21.6
		0	66	122	194	346	451	197	172.2	105	30.3
Summary		54,746	54,427	54,150	52,969	48,883	47,656	52,139	3,081.0	-1,227	-2.5

1999-00

2000-01

2001-02

2002-03

2003-04

2004-05

Mean



PORTLAND PUBLIC SCHOOLS

Enrollment Summary, October 2004: by Program Type, School and Grade Levels

Program Type		Grade Levels						Total
ODE#	School	PK	KG	1-5	6-8	9-12	UN	
886	Sabin	40	58	268	47			413
887	Scott		75	302				377
889	Sitton		48	290				338
890	Skyline		22	175				197
891	Smith		33	186				219
892	Stephenson		51	297				348
893	Sunnyside Environmental		46	169	244			459
895	Vernon	35	61	290				386
896	Vestal		56	266				322
900	Whitman		81	340				421
902	Woodlawn	38	72	299				409
903	Woodmere		71	387				458
904	Woodstock		60	283				343
Subtotal Elementary Schools		278	3,451	17,434	339		3	21,505
831	Beaumont				542			542
832	Binnsmead				687			687
848	Fernwood				582			582
849	George				473			473
852	Gray				520			520
853	Gregory Heights				630			630
858	Hosford				405			405
1277	Jackson				773			773
863	Kellogg				591			591
1243	Lane				592			592
877	Mt. Tabor				696			696
878	Ockley Green				385			385
881	Portsmouth				460			460
888	Sellwood				603			603
894	Tubman				294			294
898	West Sylvan				884			884
899	Whitaker				289			289
Subtotal Middle Schools					9,406			9,406
906	Benson					1,501		1,501
909	Cleveland					1,332		1,332
911	Franklin					1,547		1,547
912	Grant					1,848		1,848
913	Jefferson Campus					661		661
4160	School of Champions					347		347
4161	School of Pride					314		314
914	Lincoln					1,444		1,444
915	Madison					1,063		1,063
917	Marshall Campus					906		906
4153	BizTech High					217		217
4154	Linus Pauling Academy					200		200
2175	Marshall Night School					98		98
4155	PDX Academy of International Studies					198		198
4156	Renaissance Arts Academy					193		193

PORTLAND PUBLIC SCHOOLS

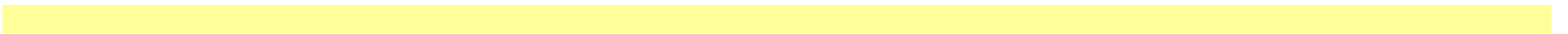
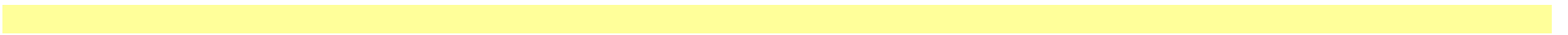
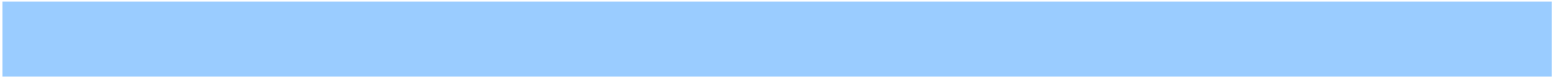
Enrollment Summary, October 2004: by Program Type, School and Grade Levels

Program Type		Grade Levels						
ODE#	School	PK	KG	1-5	6-8	9-12	UN	Total
918	Roosevelt Campus					850		850
4162	A.C.T. School					303		303
4165	P.O.W.E.R. School					261		261
4164	Spanish-English International					240		240
4163	Two Rivers Community School					46		46
922	Wilson					1,531		1,531
Subtotal High Schools						12,683		12,683
Subtotal Regular Schools & Programs		278	3,451	17,434	9,745	12,683	3	43,594
IB. FOCUS / ALTERNATIVE PROGRAMS								
4054	Access							see Sabin
1363	da Vinci				350			350
1362	Environmental Middle School							see Sunnyside
2724	Head Start Early Childhood Education	528						528
916	Metropolitan Learning Center		25	123	153	138		439
4227	Native Montessori Program	14	9					23
3167	Portland Evening H.S. at Benson					20		20
1818	Portland Night H.S. at Grant					76		76
920	Vocational Village					146		146
1364	Winterhaven (at Brooklyn)		29	135	132			296
Subtotal Focus / Alternative Programs		542	63	258	635	380	0	1,878
Subtotal Regular & Focus Programs		820	3,514	17,692	10,380	13,063	3	45,472
II. COMMUNITY-BASED PROGRAMS								
1811	Albina Youth Opportunity School					43		43
1628	DePaul Center					18		18
2409	LISTOS					57		57
1803	Mt. Scott Park Center for Learning				21			21
8002	Mt. Scott Park Center for Learning H.S.					62		62
3012	New Avenues for Youth					20		20
3151	Open Meadow / CRUE					44		44
1821	Open Meadow H.S.					81		81
3021	Open Meadow M.S.				47	2		49
2761	P.C.C. Bilingual					181		181
2762	P.C.C. G.E.D.					91		91
2763	P.C.C. H.S. Completion					168		168
2752	P.I.C. Night School					8		8
1816	P.O.I.C.				5	103		108
1658	Pacific Crest Community School				1	12		13
3496	Pathfinders Academy					10		10
1815	Portland International Community					23		23
1820	Quest Schools					77		77
2774	Y.E.I. Teen Parent					26		26
1875	Youth Employment Institute					27		27
1835	Youth Progress Association					19		19
1885	YouthBuilders					25		25
Subtotal Community-based Programs		0	0	0	74	1,097	0	1,171

PORTLAND PUBLIC SCHOOLS

Enrollment Summary, October 2004: by Program Type, School and Grade Levels

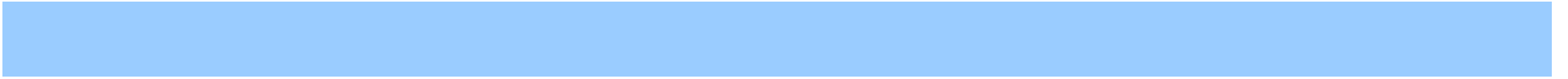
Program Type		Grade Levels						
ODE#	School	PK	KG	1-5	6-8	9-12	UN	Total



PORTLAND PUBLIC SCHOOLS

Enrollment Summary, October 2004: by Program Type, School and Grade Level

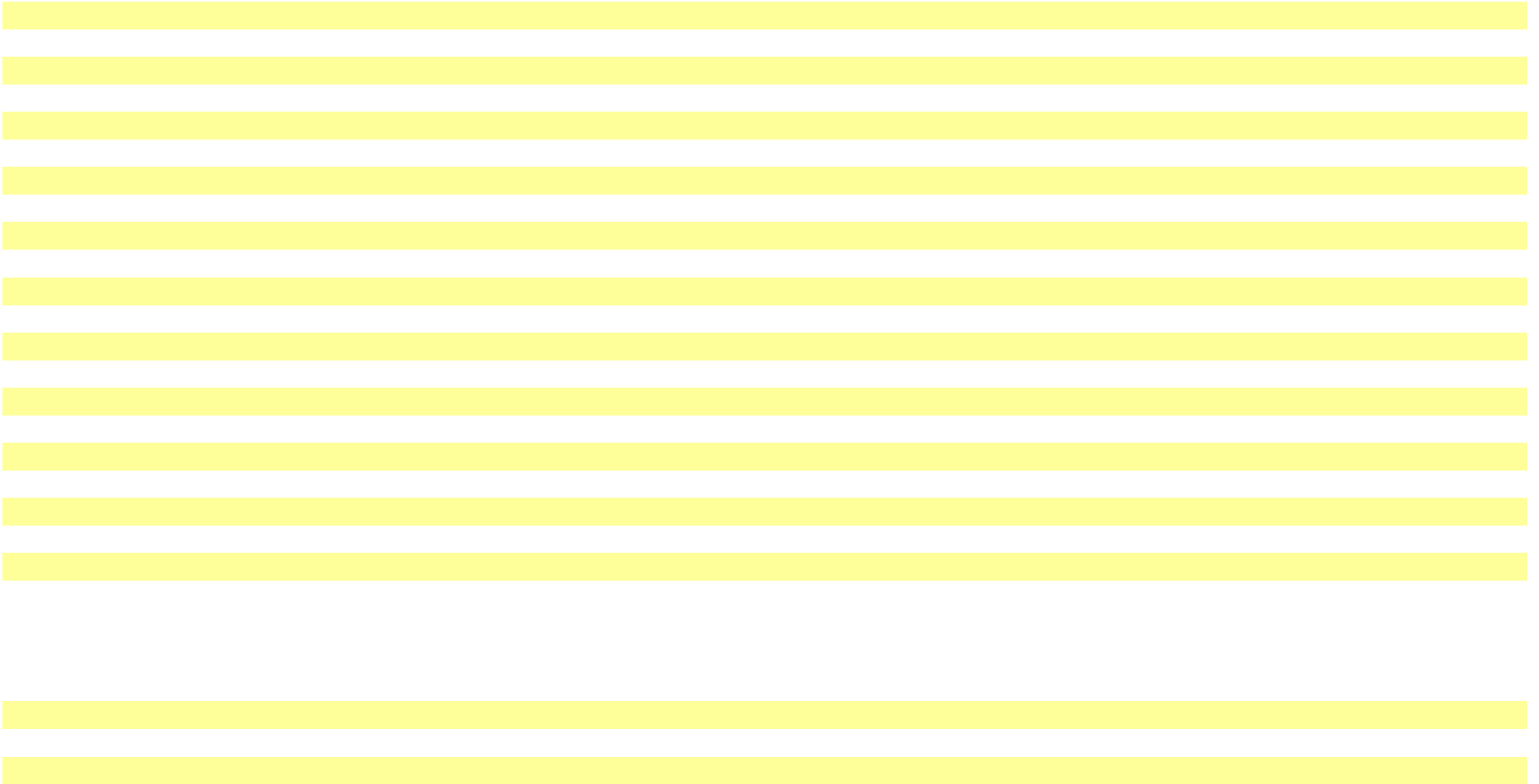
Program Type		Grade Level															
ODE#	School	PK	KG	01	02	03	04	05	06	07	08	09	10	11	12	UN	Total



PORTLAND PUBLIC SCHOOLS

Enrollment Summary, October 2004: by Program Type, School and Grade Level

Program Type		Grade Level															
ODE#	School	PK	KG	01	02	03	04	05	06	07	08	09	10	11	12	UN	Total
3167	Portland Evening H.S. at Benson												2	5	13		20
1818	Portland Night H.S. at Grant												3	18	55		76
920	Vocational Village												2	56	88		146
1364	Winterhaven (at Brooklyn)		29	27	24	26	30	28	51	55	26						296



PORTLAND PUBLIC SCHOOLS

Enrollment Summary, October 2004: by Program Type, School and Grade Level

Program Type		Grade LevelG															
ODE#	School	PK	KG	01	02	03	04	05	06	07	08	09	10	11	12	UN	Total

ODE#	School	#	%	#	%	#	%	#	%	#	%	#	%	#
822	Abernethy	2	1.0	165	81.3	12	5.9	19	9.4	5	2.5			203
823	Ainsworth	2	0.4	400	80.2	16	3.2	25	5.0	55	11.0	1	0.2	499
824	Alameda	9	1.4	516	81.9	49	7.8	35	5.6	16	2.5	5	0.8	630
825	Applegate	4	2.9	41	29.7	40	29.0	12	8.7	41	29.7			138
826	Arleta	10	3.0	190	57.2	24	7.2	59	17.8	48	14.5	1	0.3	332
827	Astor	12	4.2	204	71.1	24	8.4	14	4.9	33	11.5			287
828	Atkinson	5	0.9	239	43.2	29	5.2	113	20.4	165	29.8	2	0.4	553
829	Ball	3	1.3	60	26.3	68	29.8	25	11.0	72	31.6			228
830	Beach	5	1.2	115	27.4	123	29.4	44	10.5	131	31.3	1	0.2	419
833	Boise-Eliot	9	1.7	124	23.7	291	55.6	30	5.7	69	13.2			523
834	Bridger	8	2.1	243	62.8	34	8.8	56	14.5	46	11.9			387
835	Bridlemile	4	0.9	373	82.9	17	3.8	21	4.7	29	6.4	6	1.3	450
837	Buckman	12	2.3	412	77.9	32	6.0	32	6.0	41	7.8			529
838	Capitol Hill	9	3.5	200	78.4	11	4.3	10	3.9	22	8.6	3	1.2	255
839	Chapman	9	2.2	320	77.3	29	7.0	20	4.8	33	8.0	3	0.7	414
840	Chief Joseph	5	2.1	142	60.7	40	17.1	18	7.7	29	12.4			234
841	Clarendon	8	2.4	64	18.9	44	13.0	29	8.6	194	57.2			339
842	Clark	14	2.8	231	46.3	65	13.0	136	27.3	53	10.6			499
843	Creston	7	2.8	136	55.3	21	8.5	45	18.3	36	14.6	1	0.4	246
844	Duniway	3	0.7	391	88.3	11	2.5	23	5.2	15	3.4			443
845	Edwards	4	2.0	167	83.9	2	1.0	13	6.5	5	2.5	8	4.0	199
847	Faubion	6	2.2	91	33.8	125	46.5	14	5.2	33	12.3			269
2413	Forest Park	1	0.2	343	75.2	6	1.3	99	21.7	5	1.1	2	0.4	456
850	Glencoe	5	1.1	357	80.8	34	7.7	19	4.3	22	5.0	5	1.1	442
854	Grout	8	2.5	202	63.1	24	7.5	46	14.4	40	12.5			320
855	Hayhurst	10	2.8	248	70.3	23	6.5	20	5.7	48	13.6	4	1.1	353

PORTLAND PUBLIC SCHOOLS

Enrollment Summary, October 2004: by Program Type, School and Ethnicity

Program Type ODE# School		Ethnicity												Total #
		American Indian		European American		African American		Asian American		Hispanic American		Unspecified		
		#	%	#	%	#	%	#	%	#	%	#	%	
869	Lee	12	3.6	124	37.2	53	15.9	91	27.3	51	15.3	2	0.6	333
870	Lent	3	0.8	174	49.0	27	7.6	56	15.8	93	26.2	2	0.6	355
871	Lewis	8	3.0	225	83.0	7	2.6	13	4.8	18	6.6			271
872	Llewellyn	5	1.7	219	73.5	23	7.7	10	3.4	15	5.0	26	8.7	298
873	Maplewood	6	2.1	239	83.9	15	5.3	14	4.9	11	3.9			285
1278	Markham	1	0.3	169	56.1	49	16.3	23	7.6	33	11.0	26	8.6	301
875	Marysville	15	4.3	167	47.9	42	12.0	64	18.3	59	16.9	2	0.6	349
879	Peninsula	17	6.3	67	24.7	59	21.8	33	12.2	94	34.7	1	0.4	271
883	Richmond	6	1.5	249	63.4	29	7.4	84	21.4	5	1.3	20	5.1	393
1299	Rieke	1	0.4	215	80.8	10	3.8	31	11.7	7	2.6	2	0.8	266
884	Rigler	11	2.4	90	19.3	86	18.5	68	14.6	211	45.3			466
885	Rose City Park	12	2.8	285	65.8	33	7.6	69	15.9	33	7.6	1	0.2	433
886	Sabin	5	1.2	137	33.2	198	47.9	31	7.5	41	9.9	1	0.2	413
887	Scott	8	2.1	185	49.1	57	15.1	52	13.8	74	19.6	1	0.3	377
889	Sitton	17	5.0	142	42.0	67	19.8	29	8.6	83	24.6			338
890	Skyline	5	2.5	169	85.8	1	0.5	16	8.1	5	2.5	1	0.5	197
891	Smith	1	0.5	185	84.5	3	1.4	10	4.6	18	8.2	2	0.9	219
892	Stephenson	4	1.1	310	89.1	8	2.3	21	6.0	5	1.4			348
893	Sunnyside Environmental	13	2.8	341	74.3	51	11.1	25	5.4	29	6.3			459
895	Vernon	7	1.8	38	9.8	237	61.4	18	4.7	86	22.3			386
896	Vestal	6	1.9	155	48.1	46	14.3	72	22.4	43	13.4			322
900	Whitman	17	4.0	206	48.9	34	8.1	50	11.9	111	26.4	3	0.7	421
902	Woodlawn	1	0.2	48	11.7	276	67.5	23	5.6	61	14.9			409
903	Woodmere	10	2.2	253	55.2	26	5.7	64	14.0	103	22.5	2	0.4	458
904	Woodstock	8	2.3	180	52.5	17	5.0	123	35.9	11	3.2	4	1.2	343
		449	2.1	11,965	55.6	3,570	16.6	2,291	10.7	3,074	14.3	156	0.7	21,505
831	Beaumont	9	1.7	254	46.9	208	38.4	39	7.2	30	5.5	2	0.4	542
832	Binnsmead	15	2.2	329	47.9	80	11.6	152	22.1	110	16.0	1	0.1	687
848	Fernwood	7	1.2	359	61.7	174	29.9	17	2.9	25	4.3			582

PORTLAND PUBLIC SCHOOLS

Enrollment Summary, October 2004: by Program Type, School and Ethnicity

Program Type		Ethnicity												Total
		American Indian		European American		African American		Asian American		Hispanic American		Unspecified		
ODE#	School	#	%	#	%	#	%	#	%	#	%	#	%	#

EnrollOct04.xls

PORTLAND PUBLIC SCHOOLS

Enrollment Summary, October 2004: by Program Type, School and Ethnicity

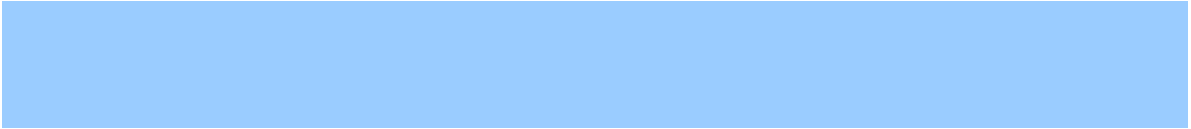
Program Type ODE# School		Ethnicity												Total #
		American Indian		European American		African American		Asian American		Hispanic American		Unspecified		
		#	%	#	%	#	%	#	%	#	%	#	%	
1885	YouthBuilders			11	44.0	7	28.0	2	8.0	5	20.0			25
Subtotal Community-based Programs		50	4.3	577	49.3	218	18.6	77	6.6	242	20.7	7	0.6	1,171
III. SPECIAL EDUCATION PROGRAMS														
1812	C.T.C. Jefferson H.S.			7	43.8	7	43.8	1	6.3	1	6.3			16
1813	C.T.C. P.S.U.	1	5.3	17	89.5	1	5.3							19
1814	C.T.C. Southeast	1	1.7	40	69.0	12	20.7	3	5.2	1	1.7	1	1.7	58
908	Clinton Street School	1	2.7	28	75.7	3	8.1	1	2.7	4	10.8			37
3506	B Programs at Green Thumb, Foster & Youngson	1	0.7	65	48.5	56	41.8	2	1.5	7	5.2	3	2.2	134
2751	Home Instruction					1	100.0							1
907	John's Landing School	2	8.7	17	73.9	2	8.7	1	4.3	1	4.3			23
2275	Morrison Breakthrough	5	27.8	7	38.9					6	33.3			18
1279	Morrison Hand in Hand	2	9.1	15	68.2	5	22.7							22
1281	Nickerson Adolescent D.T.	2	15.4	8	61.5	3	23.1							13
880	Parry Center	1	2.6	31	79.5	2	5.1	1	2.6	4	10.3			39
2765	Part-time Home/Private	2	2.9	47	67.1					1	1.4	20	28.6	70
1805	Providence Hospital			16	94.1					1	5.9			17
923	Rosemont	1	1.9	39	75.0	5	9.6	1	1.9	6	11.5			52
897	Waverly Children's Home			12	66.7	4	22.2			2	11.1			18
921	White Shield	1	4.2	9	37.5	5	20.8	1	4.2	7	29.2	1	4.2	24
1689	Woodmont					1	100.0							1
Subtotal Special Education Programs		20	3.6	358	63.7	107	19.0	11	2.0	41	7.3	25	4.4	562
IV. PUBLIC CHARTER PROGRAMS														
3451	CM2's Opal School	2	2.8	53	74.6	10	14.1			4	5.6	2	2.8	71
3991	Emerson Public Charter	1	1.0	62	63.9	14	14.4	12	12.4	7	7.2	1	1.0	97
4215	Garden Laboratory Charter School			34	97.1			1	2.9					35
4212	Self Enhancement Academy	1	2.0	3	6.1	43	87.8			2	4.1			49
3616	Trillium Public Charter	7	3.5	138	69.3	41	20.6	5	2.5	6	3.0	2	1.0	199
Subtotal Public Charter Programs		11	2.4	290	64.3	108	23.9	18	4.0	19	4.2	5	1.1	451
Summary		1,039	2.2	27,625	58.0	7,781	16.3	4,860	10.2	6,045	12.7	306	0.6	9

-10(6))-(

PORTLAND PUBLIC SCHOOLS

Enrollment Summary, October 2004: by Program Type, School and Gender

Program Type		Gender				Total
		Female		Male		
ODE#	School	#	%	#	%	#
IA. REGULAR SCHOOLS & PROGRAMS						
822	Abernethy	101	49.8	102	50.2	203
823	Ainsworth	268	53.7	231	46.3	499
824	Alameda	312	49.5	318	50.5	630
825	Applegate	69	50.0	69	50.0	138
826	Arleta	151	45.5	181	54.5	332
827	Astor	139	48.4	148	51.6	287
828	Atkinson	290	52.4	263	47.6	553
829	Ball	109	47.8	119	52.2	228
830	Beach	190	45.3	229	54.7	419
833	Boise-Eliot	251	48.0	272	52.0	523
834	Bridger	188	48.6	199	51.4	387
835	Bridlemile	244	54.2	206	45.8	450
837	Buckman	300	56.7	229	43.3	529
838	Capitol Hill	130	51.0	125	49.0	255
839	Chapman	203	49.0	211	51.0	414
840	Chief Joseph	103	44.0	131	56.0	234
841	Clarendon	162	47.8	177	52.2	339
842	Clark	241	48.3	258	51.7	499
843	Creston	111	45.1	135	54.9	246
844	Duniway	209	47.2	234	52.8	443
845	Edwards	109	54.8	90	45.2	199
847	Faubion	147	54.6	122	45.4	269
2413	Forest Park	214	46.9	242	53.1	456
850	Glencoe	209	47.3	233	52.7	442
854	Grout	152	47.5	168	52.5	320
855	Hayhurst	185	52.4	168	47.6	353
857	Hollyrood	121	57.3	90	42.7	211
860	Humboldt	117	45.9	138	54.1	255
861	Irvington	231	48.8	242	51.2	473
862	James John	234	48.6	247	51.4	481
864	Kelly	250	52.3	228	47.7	478
865	Kenton	84	50.6	82	49.4	166
866	King	266	50.7	259	49.3	525
868	Laurelhurst	284	50.9	274	49.1	558
869	Lee	146	43.8	187	56.2	333
870	Lent	171	48.2	184	51.8	355
871	Lewis	142	52.4	129	47.6	271
872	Llewellyn	146	49.0	152	51.0	298
873	Maplewood	134	47.0	151	53.0	285
1278	Markham	140	46.5	161	53.5	301
875	Marysville	160	45.8	189	54.2	349
879	Peninsula	130	48.0	141	52.0	271
883	Richmond	214	54.5	179	45.5	393
1299	Rieke	138	51.9	128	48.1	266
884	Rigler	219	47.0	247	53.0	466
885	Rose City Park	195	45.0	238	55.0	433



PORTLAND PUBLIC SCHOOLS

Enrollment Summary, October 2004: by Program Type, School and Gender

Program Type		Gender				Total
		Female		Male		
ODE#	School	#	%	#	%	#
918	Roosevelt Campus	422	49.6	428	50.4	850
4162	A.C.T. School	135	44.6	168	55.4	303
4165	P.O.W.E.R. School	138	52.9	123	47.1	261
4164	Spanish-English International	119	49.6	121	50.4	240
4163	Two Rivers Community School	30	65.2	16	34.8	46
922	Wilson	720	47.0	811	53.0	1,531
		6,127	48.3	6,556	51.7	12,683
		21,328	48.9	22,266	51.1	43,594
4054	Access					see Sabin
1363	da Vinci	234	66.9	116	33.1	350
1362	Environmental Middle School					see Sunnyside
2724	Head Start Early Childhood Education	275	52.1	253	47.9	528
916	Metropolitan Learning Center	253	57.6	186	42.4	439
4227	Native Montessori Program	13	56.5	10	43.5	23
3167	Portland Evening H.S. at Benson	10	50.0	10	50.0	20
1818	Portland Night H.S. at Grant	40	52.6	36	47.4	76

